



# READ-A-THON

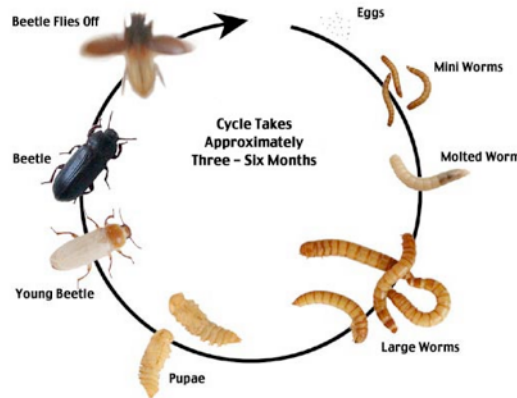
February 27&28, 2014

Mealworms are the larval (or worm-like stage) of the mealworm beetle's lifecycle. Look at their shiny exoskeleton! They are sometimes sold as a healthy snack--can you imagine the crunch?

Mealworms molt (shed their exoskeletons) between each larval stage.



Life Cycle of the Mealworm

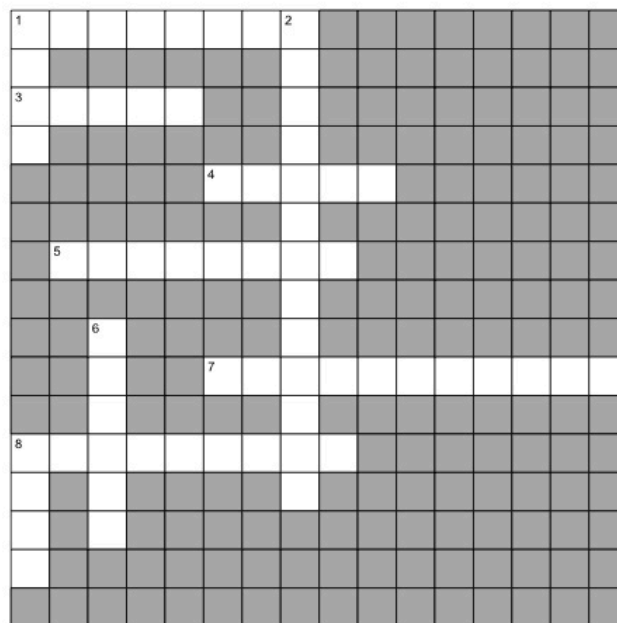


The silkworm is the larva, or caterpillar, of the silkworm, which is raised for silk production. Their habitat is the mulberry tree. Did you know silk is just the strands of a silkworm cocoon?



Milkweed bugs feed on milkweed plants. They eat through a long mouth part known as a rostrum, or proboscis. Unlike mealworms and silkworms, milkweed bugs have no pupal stage. The pupa is where some insects complete metamorphosis, like the chrysalis for a butterfly. Instead, milkweeds are "nymphs" between the egg and adult stages.

## Bugs



### Across

1. A type of beetle--that you can eat!
3. An early stage of an insects lifecycle.
4. A milkweed bug will be a \_\_\_ instead of a larva or pupa.
5. Silkworm
7. Instead of bones, insects have "shells" or \_\_\_.
8. With one of these, you'll never need a straw.

### Down

1. To leave your exoskeleton behind
2. The final change from pupa to adult.
6. A silkworm pupa
8. One of the last stages before adulthood--like a teenage bug.